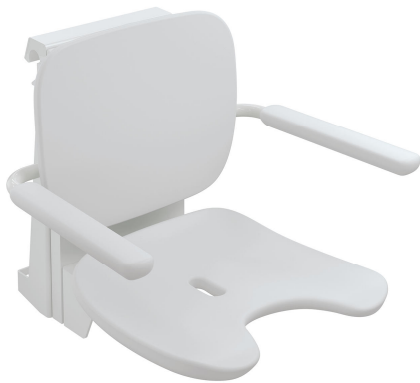


Product data sheet
Hanging seat Premium 802.51.13860

HEWI

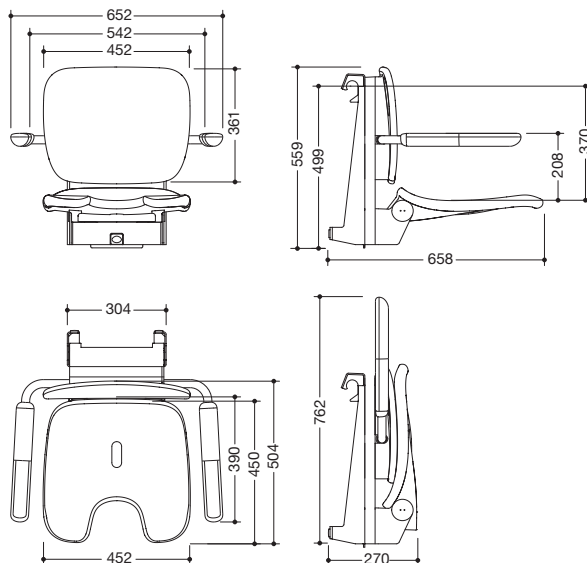


Hanging seat Premium 802.51.13860

- ergonomically shaped seat with back and armrests
- used for safe sitting in the shower area
- high-quality plastic surface and scratch-resistant powder coating
- seat weight capacity up to 150 kg
- seat can be folded up to save space
- maintenance free, permanently smooth and easy moving joint
- 652 mm wide, 559 mm high, 658 mm deep
- when folded up 762 mm high and 270 mm deep
- seat 452 mm wide, 450 mm deep
- Seat with pubic cutout and water drainage
- seat height adjustable to four levels from 420 mm to 510 mm (every 30 mm)
- for hanging into all HEWI shower grab rails and support rails
- Suspension made of stainless steel, powder-coated in the HEWI colours signal white, glossy with seat/back surface and armrests made of high-quality PUR/integral hard foam in SD (signal white, matt) or suspension in anthracite, glossy with seat/back surface and armrests in DR (anthracite, matt) with high-gloss chrome-plated design elements
- armrests can be folded up and down separately
- produced in accordance with Regulation (EU) 2017/745 on medical devices
- fulfils the DIN 18040 and ÖNORM B1600/1601 requirements



Dimensions in mm



Surfaces

SD	DR
----	----

Technical information subject to alteration, 11th February 2022

HEWI Heinrich Wilke GmbH
Postfach 1260
D-34442 Bad Arolsen

Telefon: +49 5691 82-366
Telefax: +49 5691 82-99366
international@hewi.com
www.hewi.com

HEWI (UK) Limited
Holm Oak Barn, Beluncle Halt
Stoke Road
Hoo Kent ME3 9NT

Phone +44 1634 258 200
Fax +44 1634 250 099
info@hewi.co.uk
www.hewi.com